

streaming  
energy





GERMAN  
**INNOVATION**  
AWARD '24  
**GOLD**



GERMAN  
**DESIGN**  
AWARD  
SPECIAL  
**2023**



Up to  
**1MW**

electrical efficiency  
**>97%**

CCS connection  
**360°**

World's smallest HPC station

>97% electrical efficiency,  
+ up to 3% energy recuperation

Ultra lightweight charging handle

360° CCS connection

Integrated street lighting

RingNet ready







### Service

- ⌘ Easy access
- ⌘ High reliability
- ⌘ Max. availability
- ⌘ Exchangeable modules
- ⌘ Hot plug capability



### Software

- ⌘ Access and user control by Android/iOS application
- ⌘ Customer support from backend
- ⌘ Dynamic energy management

### Illumination

- ⌘ Integrated streetlight
- ⌘ Integrated lighting for communication
- ⌘ Environment-friendly illumination
- ⌘ Backend controlled lighting
- ⌘ Individual illumination for advertising and branding



### Charging technology

- ⌘ Parallel, sequential and priority charging
- ⌘ Liquid cooled power electronics
- ⌘ Efficiency > 97 % (electric)

### Accessibility

- ⌘ 360° charging gun connection
- ⌘ Variable connection arm
- ⌘ No cables on ground
- ⌘ Automated cable re-positioning
- ⌘ Barrier-free access and handling
- ⌘ Compatible to various vehicle types



### Safety

- ⌘ Collision protection by flexible design
- ⌘ Safe handling by smooth materials
- ⌘ Anti-Vandalism and safety devices

### Urban furniture

- ⌘ Compact architecture and construction
- ⌘ Seamless area integration
- ⌘ Footprint: 0,004 m² only!

### Ecosystem

- ⌘ No noise emission
- ⌘ Active waste heat usage



### Individualisation

- ⌘ White labeled product
- ⌘ White labeled app and interface
- ⌘ Operator homologation
- ⌘ Open frontend and backend

### CCS/GBT/NACS up to 1000A

- ⌘ Vehicle type independent connection
- ⌘ Stable power supply
- ⌘ Lightweight charging cable and plug
- ⌘ High Power Charging
- ⌘ Uncooled and cooled version available

# SupraCharger

Your E-Mobility-Hub



## DC input

- Input voltage range: 500 V–1150 V DC
- Energy from: DC-Source, PV, Battery

## DC output

- Max. output power: 4x up to 1000kW
- Output voltage range: 150V–950V DC

## Liquid cooling

- Input Liquid Temperature:  $-20^{\circ}\text{C}$ – $+50^{\circ}\text{C}$
- Flow rate: 110 bis 150l/min
- Liquid: Water /Glycol (60%/40%)

## Environment

- Storage temperature:  $-40^{\circ}$ – $+70^{\circ}$
- Communication: WIFI, Ethernet, Open Charge Point Protocol 2.0 (OCPP)
- Average operating time between failures: > 500.000 hours
- Safety standards: IEC 61851-1, IEC 61851-23, CE
- Electromagnetic compatibility: 2014/30/EU



# DC Cube

The DC Cube is the DC fast charger with the world's smallest required installation space.

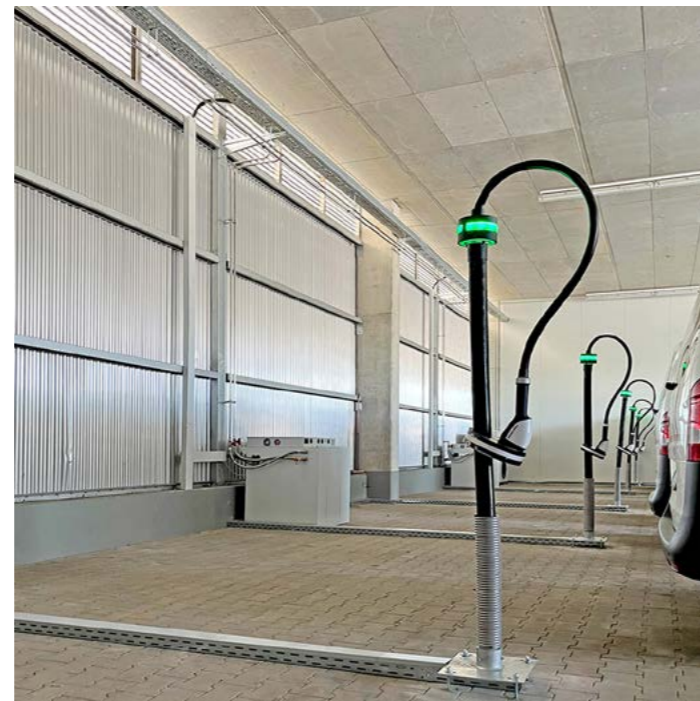


### DC input

- Input voltage range: 500 V–1150 V DC
- Max. input current: 220 A

### DC output

- Max. output power: 140 kW –950 kW
- Output voltage range: 200 V–950 V DC
- CCS PLC: DIN 70121, ISO 15118



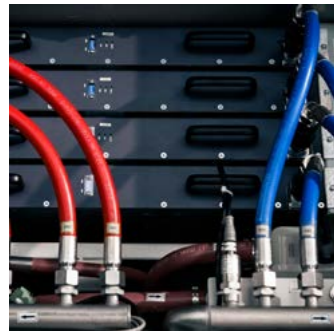
### Liquid cooling

- Controllable liquid temperature: -20°C–+50°C
- Liquid: non-conductive, biodegradable
- Thermal management: external use of loss heat possible

### Environment

- Storage temperature: -40°~+70°
- Communication: WIFI, Ethernet, Open Charge Point Protocol 2.0 (OCPP)
- Average operating time between failures: > 500.000 hours
- Safety standards: IEC 61851-1, IEC 61851-23, CE
- Electromagnetic compatibility: 2014/30/EU
- Protection class: IP68





## DC Rectifier

**DCRectifier 35kW the liquid cooled DC power source**

### DC input

- Input Range: 500V to 1150V DC
- Max. Input Current: 55A

### DC output

- Max. Output Power: 35kW
- Output Voltage Range: up to 1000V DC

### Liquid cooling

- Controllable Liquid Temperature: +5°C to +55°C
- Flow Rate: 8l/min / up to 10 bar

### Environment

- Storage Temperature: -40°C to +70°C
- Communication: CAN bus
- MTBF: > 500,000 hours
- Safety: EU: IEC 61851-1, IEC 61851-23, CE
- EMC: EU: 2014/30/EU
- Dimension: 638x411x64mm



## DC Source

**DC Source – for stable power grids with up to 32 MW manageable DC-Power**

480 kW – 32 MW  
 420-680 kW per unit  
 Microgrid up to 32 MW  
 DC Connect 1000



## DC Box

Quickly positionable charging box with 40 kW output power

### DC input

- CEE connection: 125 A
- Input voltage range: 3Phase, 260Vac – 530Vac

### DC output

- Max. output power: 40 kW
- Output voltage range: 200 V–950 V DC
- CCS PLC: DIN 70121, ISO 15118

### Environment

- Storage temperature:  $-40^{\circ} \sim +70^{\circ}$
- Communication: WIFI
- Average operating time between failures: >500.000 hours
- Safety standards: IEC 61851-1, IEC 61851-23, CE
- Electromagnetic compatibility: 2014/30/EU

### Air cooling



## DC Wall

The facade charger is the worlds thinnest and smallest DC high power charger

### DC input

- Input voltage range: 500 V–1000 V DC

### DC output

- Max. output power: 70 kW–280 kW
- Output voltage range: 200 V–950 V DC

### Liquid cooling

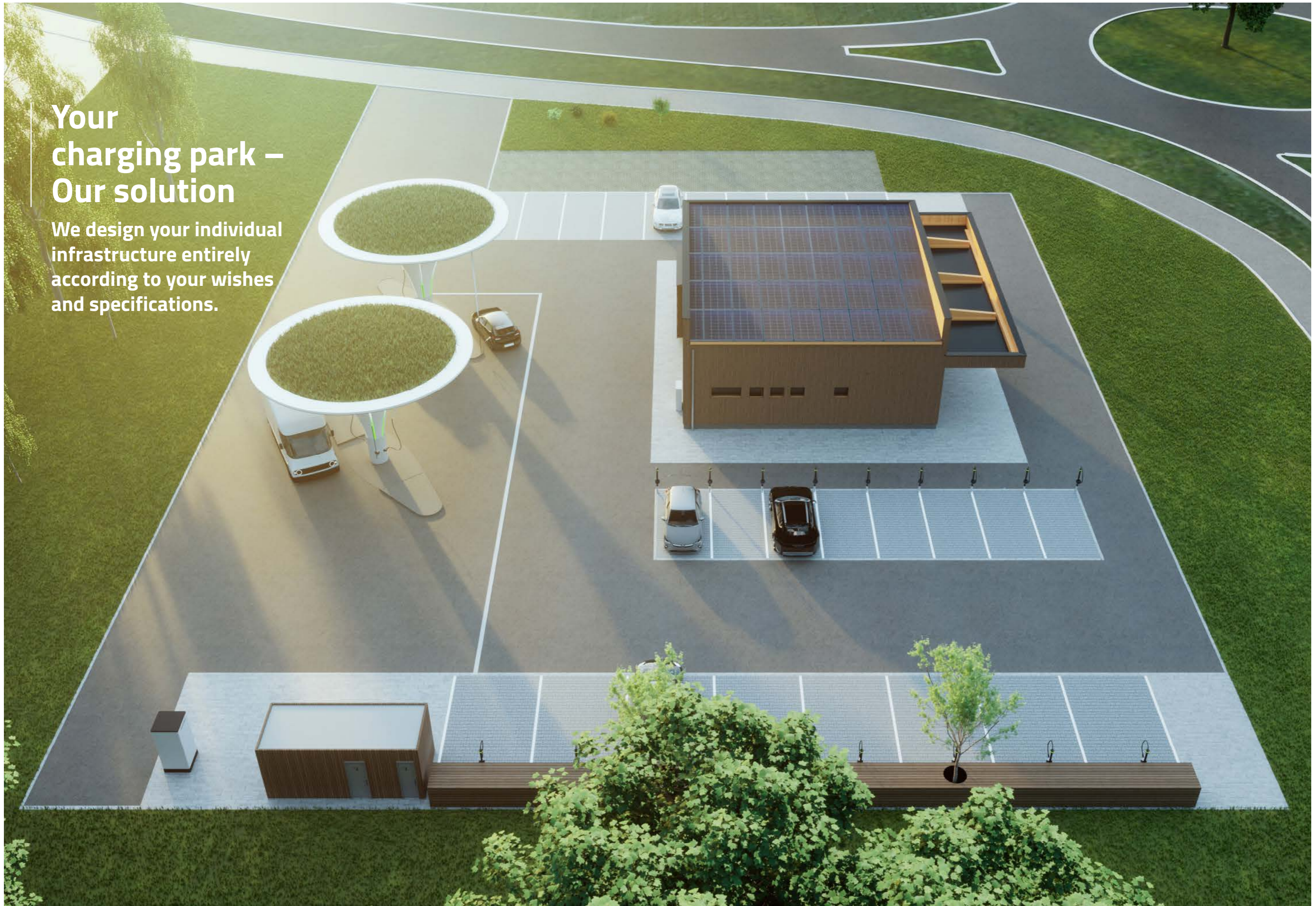
- Input temperature of the liquid:  $-20^{\circ} \text{C} \sim +50^{\circ} \text{C}$
- Flow rate: 15–20 l/min

### Environment

- Storage temperature:  $-40^{\circ} \sim +70^{\circ}$
- Communication: WIFI and Ethernet
- Average operating time between failures: >500.000 hours
- Safety standards: IEC 61851-1, IEC 61851-23
- Electromagnetic compatibility: 2014/30/EU

# Your charging park – Our solution

We design your individual infrastructure entirely according to your wishes and specifications.







---

**eLoaded GmbH**  
Carl-von-Linde Str. 8  
D-86551 Aichach  
info@eloaded.eu  
www.eloaded.eu

---